



Omega 3 Fatty Acid (O3FA)  
Bioabsorbable **Coated Mesh**



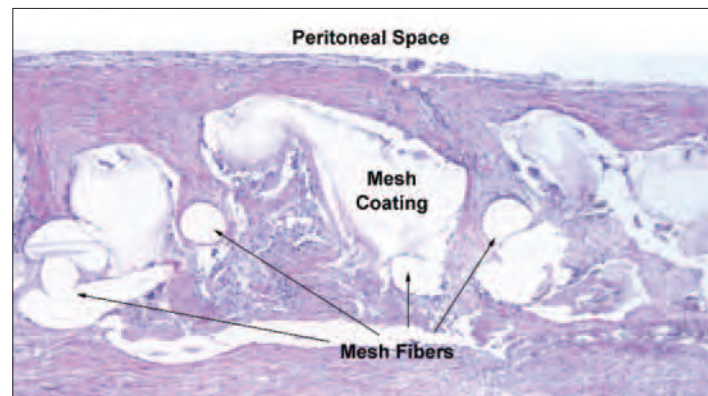
**O3FA** | *Omega 3  
BioAbsorbable Oil  
Coating Technology*

## SUPERIOR HEALING WITH OMEGA 3 TECHNOLOGY

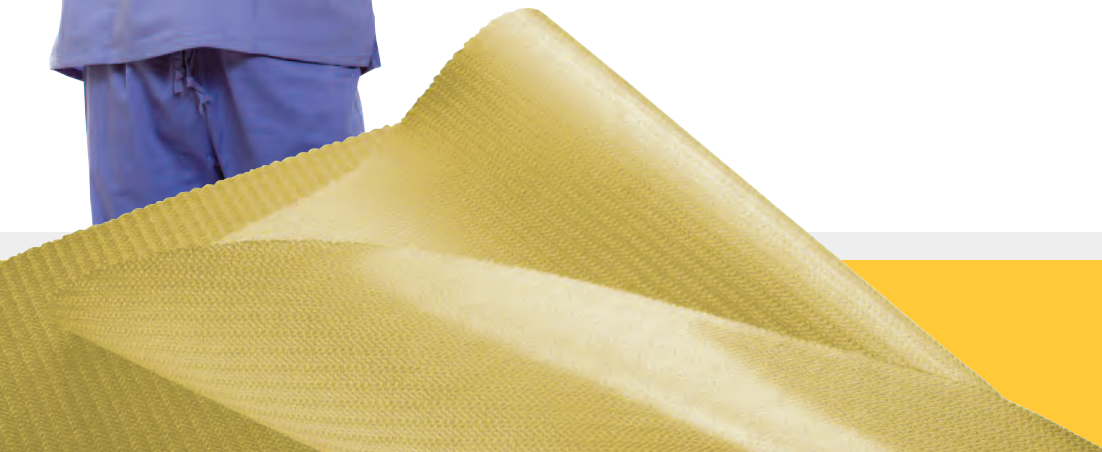
Atrium's C-QUR™ Family of soft tissue repair products combine the clinically proven ProLite™ polypropylene with an advanced Omega 3 fatty acid (O3FA) coating technology to provide patients with a durable, long lasting repair, and a more natural healing experience.

Figure 1

In pre-clinical studies, the Omega 3 fatty acid coated polypropylene mesh exhibited significantly less inflammatory cell recruitment than bare polymer, uncoated polypropylene mesh products, resulting in a more complete and fully incorporated repair (fig. 1).



*Histology shows complete tissue incorporation with minimal inflammatory response.*



# Check Out Our Family of Products to Suit All Your Hernia Mesh Needs

## FAVORABLE CLINICAL OUTCOMES

Additionally, C-QUR has compared favorably in both clinical and pre-clinical studies to several commercially available products commonly used for intraperitoneal hernia repair. When evaluated for extent of visceral tissue attachment and mesh contraction, C-QUR performs as well or better than the other currently marketed products (Tables 1 & 2).

Table 1. Adhesion Properties and Mesh Contraction

	Tissue Attachment Amount (%) 120 Days	Tissue Attachment Tenacity (1-4) 120 Days	Mesh Contraction (%) 120 Days
<b>C-QUR™</b>	<b>3.0 ± 7.3</b>	<b>1.2 ± 0.4</b>	<b>3.3 ± 2.1</b>
<b>ProLite Ultra™</b>	10.7 ± 19.8	1.7 ± 1.1	9.1 ± 8.3
<b>Composix®</b>	24.8 ± 37.0	1.9 ± 1.2	7.2 ± 7.1
<b>DualMesh®</b>	1.4 ± 4.4	1.3 ± 0.9	39.0 ± 6.0
<b>Parietex®</b>	0.8 ± 2.0	1.2 ± 0.4	14.7 ± 5.0
<b>Proceed®</b>	28.8 ± 16.1	2.8 ± 1.0	29.7 ± 12.5
<b>Sepramesh®</b>	0.0 ± 0.0	1.0 ± 0.0	6.4 ± 8.4

Pierce, R.A. et al. "120-Day Comparative Analysis of Adhesion Grade and Quantity, Mesh Contraction, and Tissue Response to a Novel Omega-3 Fatty Acid Bioabsorbable Barrier Macroporous Mesh After Intraperitoneal Placement." *Surg Innov* (2009) Volume 16, Number 1, 46-54.

Table 2. Adhesion Characteristics of Intraperitoneal Mesh

	Adhesion Tenacity (1-4)	Adhesion Surface Area (1-10)	Adhesiolysis Time/Mesh Surface Area (min/cm²)
<b>C-QUR™ (n= 5)</b>	<b>2.8 ± 0.4</b>	<b>4.8 ± 1.8</b>	<b>0.14 ± 0.1</b>
<b>Uncoated Polypropylene (n=12)</b>	3.5 ± 0.9	8.4 ± 1.1	0.38 ± 0.4
<b>Composix® (n=17)</b>	3.5 ± 0.6	8.6 ± 1.1	0.36 ± 0.1
<b>DualMesh® (n=14)</b>	2.4 ± 0.6	5.9 ± 1.8	0.12 ± 0.1
<b>Parietex® Composite (n=1)</b>	3	6	0.25
<b>Proceed® (n=8)</b>	3.4 ± 0.5	8.1 ± 1.5	0.28 ± 0.1
<b>Sepramesh® (n=4)</b>	3.3 ± 0.5	7.5 ± 1.3	0.16 ± .01
<b>Biologic Mesh (n=8)</b>	2.9 ± 0.4	6.6 ± 1.8	0.33 ± 0.1

Jenkins, E. D. et al. "Prospective Evaluation of Adhesion Characteristics to Intraperitoneal Mesh and Adhesiolysis-related Complications During Laparoscopic Re-exploration After Prior Ventral Hernia Repair." *Surg Endosc* (2010) Volume 24, Number 12, 3002-3007.

With numerous design configurations and sizes available for virtually every hernia procedure, the C-QUR Family of soft tissue repair products empowers the surgeon to choose the right mesh reinforcement for their patients' needs, including patient comfort, safety and long term recovery.

"The C-QUR Mesh has emerged as a first-line choice because it is particularly well suited to address the issues encountered during hernia surgery."

### David Earle, MD, FACS

Assistant Professor of Surgery  
 Director, Minimally Invasive Surgery  
 Baystate Medical Center  
 Tufts University School of Medicine  
 Springfield, Massachusetts

*General Surgery News Special Report*  
 The Benefits of Omega-3 Fatty Acid-Coated Mesh in Ventral Hernia Repair

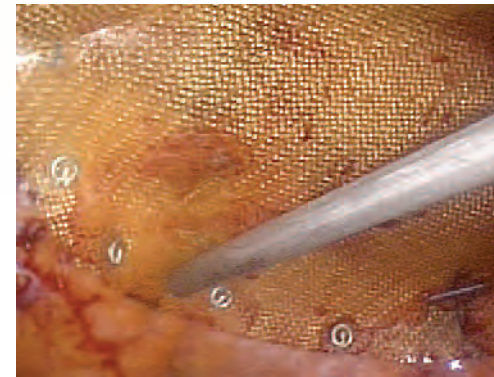


## C-QUR Film Coated Mesh

Designed for **open** and **laparoscopic** hernia repair when a tissue separating layer is needed

**C-QUR™ Mesh** combines Atrium's ProLite™ polypropylene mesh with a **tissue separating film layer** of all-natural, pharmaceutical grade Omega 3 fatty acid. A perfect choice for intra-abdominal placement, C-QUR™ Mesh outperforms all competitive products in regards to handling, positioning and fixation stability, while providing a more natural healing experience for the patient.

- Atrium's ProLite™ polypropylene mesh construction provides optimal burst and fixation retention strength necessary for today's challenging hernia patients
- Tight trocar roll up capability with minimal edge curl
- Exceptional see-thru clarity helps surgeon identify anatomical landmarks and assure proper mesh fixation
- Ability to trim and customize mesh shape at the surgeon's discretion, without loss of strength



*Laparoscopic view of C-QUR following surgical implantation*



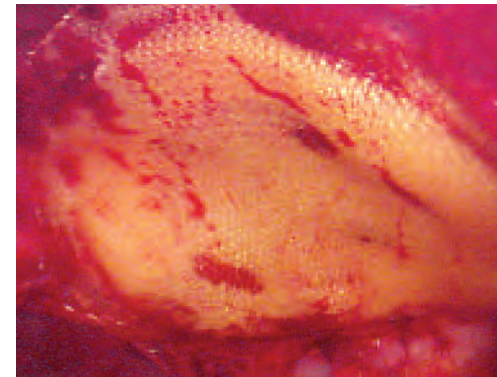
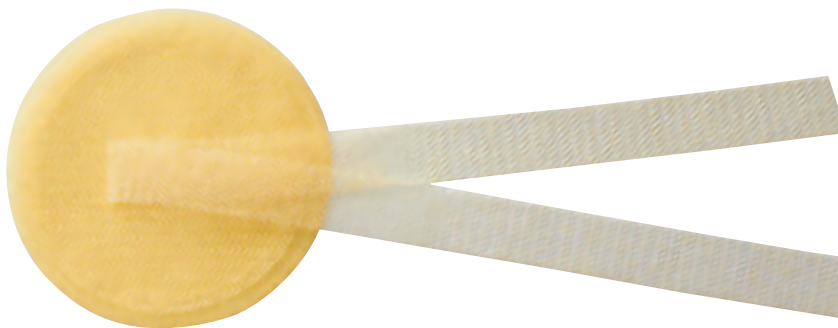
# INDICATIONS

## C-QUR V-Patch Film Coated Mesh

Designed for the repair of small hernias such as **umbilical**, **epigastric** and **trocar site** defects

**C-QUR V-Patch™** combines the clinically proven performance of ProLite™ polypropylene mesh with an all-natural, pharmaceutical grade Omega 3 fatty acid (O3FA) bioabsorbable coating and advanced deployment technology.

- Exclusive advanced deployment system allows for easy implantation of the device through a small defect
- Non-distorting fixation straps provide uniform lift and conformability towards abdominal wall, maximizing contact for uniform and complete tissue incorporation
- All natural O3FA coating provides less foreign body reaction for faster, more complete mesh incorporation
- Only umbilical patch with an all-natural absorbable coating



*Laparoscopic view of C-QUR V-Patch™ following surgical implantation.*

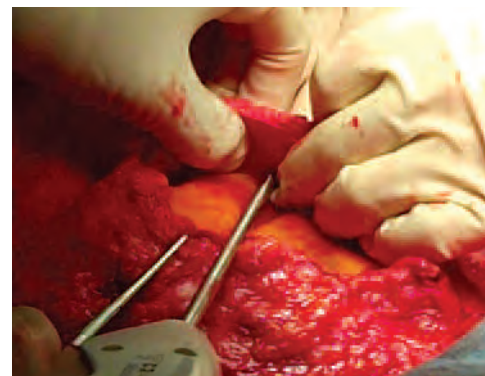


## C-QUR TacShield Film Coated Mesh

Designed for the surgical repair of **medium to large size open ventral** hernia repairs

**C-QUR TacShield™** combines the C-QUR™ Mesh platform with advanced fixation guidance technology for open abdominal wall repair. C-QUR TacShield™, with its novel **Symmetrical Fixation Apron (SFA)**, provides improved handling, and fixation guidance for enhanced surgical convenience and patient protection.

- Unique Symmetrical Fixation Apron provides enhanced fixation guidance, stability, and protection
- Simplifies surgical placement and alignment of the mesh
- Saves time in the operating room when compared to traditional, single layer mesh products
- Available in a wide variety of sizes



*Open ventral hernia repair using C-QUR TacShield™*

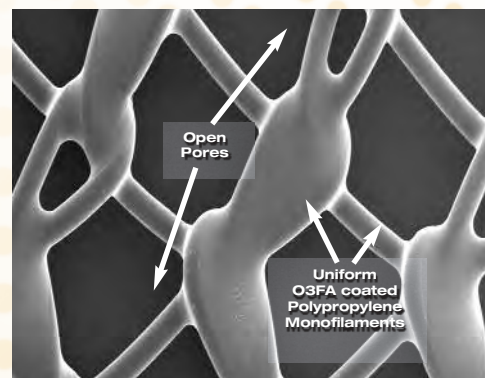


## C-QUR **FX** Filament Coated Mesh

Designed for **open** and **laparoscopic** hernia repair when a tissue separating layer is not needed

**C-QUR™ FX** filament coated mesh is the open pore ProLite™ family of polypropylene mesh with an absorbable, 30-day, all-natural pharmaceutical grade Omega 3 fatty acid coating. The open pores and filament coating help promote faster, more complete incorporation throughout. The O3FA coating also provides **uncompromised memory with significantly improved handling vs. non-coated bare polymer mesh products.**

- Incites a less severe inflammatory response when compared to bare polymer meshes allowing for less fibrous formation and less rigid tissue incorporation
- Preferred handling with uncompromised memory and see thru clarity
- Optimal burst and fixation retention strength



*Individual mesh monofilaments coated with Omega 3 fatty acid (O3FA) improve handling and healing*



**ATRIUM**  
[www.atriummed.com](http://www.atriummed.com)

## C-QUR™ Mesh

	Part No.	Cm	Inches	Box Qty.
Square / Round	31543	8.9 x 8.9	3.5 x 3.5	1 each
	31544	12.5 x 12.5	5 x 5	1 each
Oblong / Oval	31526	7.5 x 15	3 x 6	1 each
	31528	10 x 15	4 x 6	1 each
	31527	11 x 14	4.3 x 5.5	1 each
	31531	13.5 x 17.8	5.4 x 7	1 each
	31533	15 x 20.3	6 x 8	1 each
	31534	15 x 23	6 x 9	1 each
	31538	16 x 31.2	6.3 x 12.3	1 each
Mid-Line Oval	31538	16 x 31.2	6.3 x 12.3	1 each
X-Large Oblong / Oval	31535	17.8 x 23	7 x 9	1 each
	31536	20.3 x 25.4	8 x 10	1 each
	31537	20.3 x 30.5	8 x 12	1 each
	31540	25.4 x 35.5	10 x 14	1 each
	31542	30.5 x 45.7	12 x 18	1 each

## C-QUR TacShield™

	Part No.	Cm	Inches	Box Qty.	
Round	31610	11.4	4.5	1 each	
	31626	7.5 x 15	3 x 6	1 each	
Oblong	31628	10 x 15	4 x 6	1 each	
	31644	12 x 12	5 x 5	1 each	
	31633	15 x 20	6 x 8	1 each	
	31636	20 x 25	8 x 10	1 each	
	31637	20 x 30	8 x 12	1 each	
	Oval	31638	16 x 31.2	6.3 x 12.3	1 each
		31611	22.1 x 27.1	8.7 x 10.7	1 each
31612		27.4 x 34.9	10.8 x 13.7	1 each	

## C-QUR V-Patch™

	Part No.	Cm	Inches	Box Qty.
	31200	4.3 x 4.3	1.7 x 1.7	1 each
	31201	6.4 x 6.4	2.5 x 2.5	1 each
	31202	8.0 x 8.0	3.2 x 3.2	1 each

## C-QUR™ FX

	Part No.	Cm	Inches	Box Qty.	
Square / Round	31324	7.5 x 7.5	3 x 3	1 each	
	31332	15 x 15	6 x 6	1 each	
	31391	15.5 x 15.5	6.25 x 6.25	1 each	
	31341	30.5 x 30.5	12 x 12	1 each	
Oblong / Oval	31321	2.5 x 10	1 x 4	1 each	
	31322	5 x 10	2 x 4	1 each	
	31323	5 x 30.5	2 x 12	1 each	
	31326	7.5 x 15	3 x 6	1 each	
	31328	10 x 15	4 x 6	1 each	
	31336	20.3 x 25.4	8 x 10	1 each	
	31340	25.4 x 35.5	10 x 14	1 each	
	31342	30.5 x 45.7	12 x 18	1 each	
	Laparoscopic / Pre-Shape <i>With Hole</i>	31385	10.5 x 14.6	4.1 x 5.7	1 each
		31388	10.5 x 14.6	4.1 x 5.7	1 each
		<i>No Hole</i>			

Additional sizes pending. Please refer to our website [www.atriummed.com](http://www.atriummed.com) for a complete listing of C-QUR™ products.

### ATRIUM MEDICAL CORPORATION

5 Wentworth Drive  
 Hudson, New Hampshire 03051 U.S.A.  
 ☎ 603-880-1433    📠 603-880-6718

### ATRIUM EUROPE B.V.

Rendementsweg 20 B  
 3641 SL Mijdrecht, The Netherlands  
 ☎ +31 297 230 420    📠 +31 297 282 653

### ATRIUM AUSTRALIA-PACIFIC RIM PTY. LTD.

Level 6, 579 Harris Street  
 Ultimo NSW 2007 Australia  
 ☎ +61 2 8272 3100    📠 +6 12 8272 3199